



ANY I/O ANYWHERE

An artificial intelligence platform tuned for rapid development and deployment. Easily change between Vision, RF, or Ethernet/Optical data types via the PCI Express expansion slot.

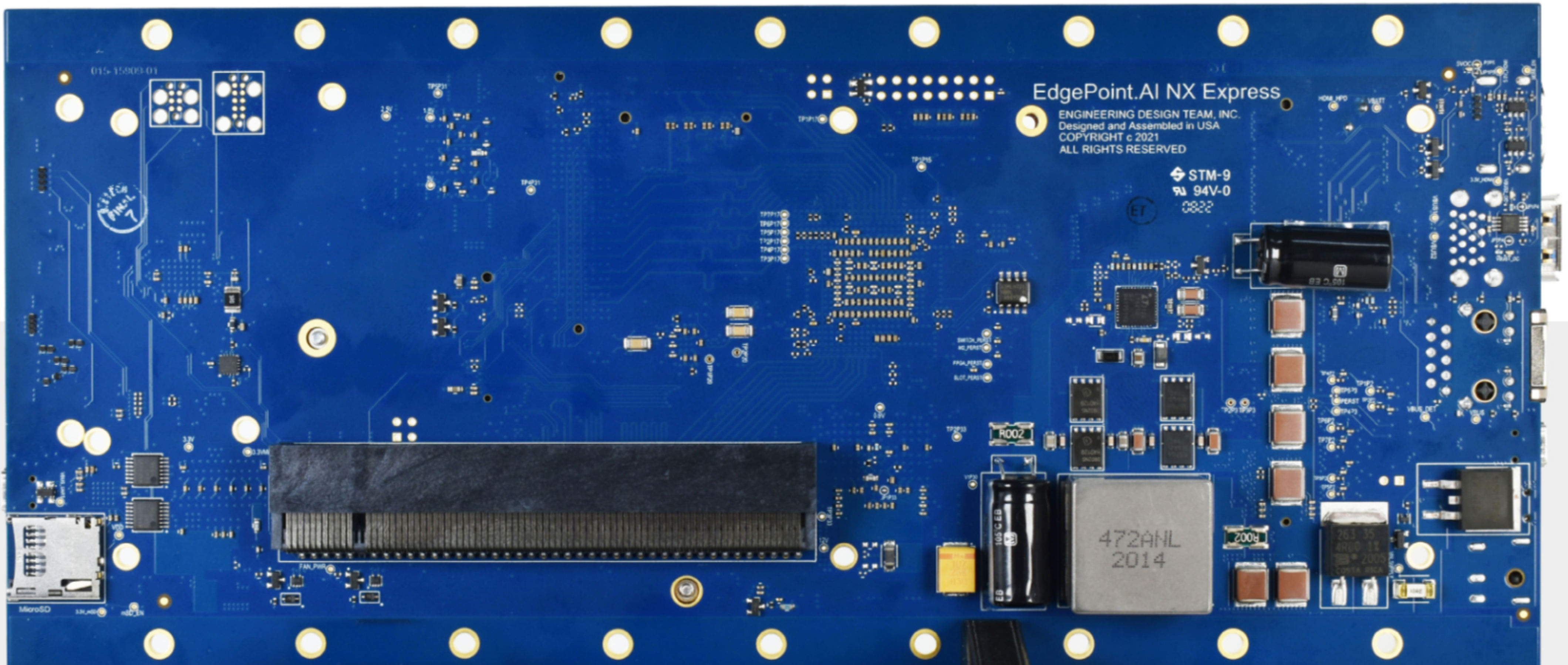
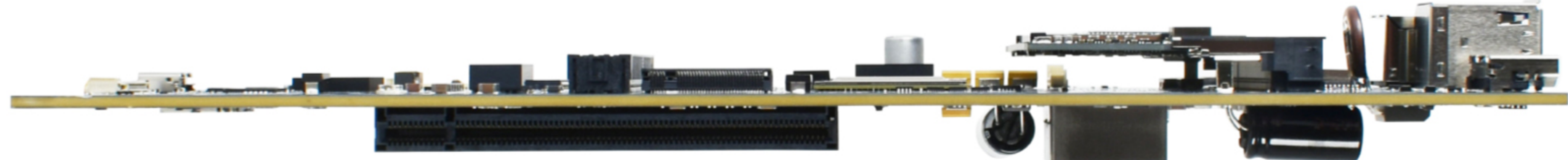
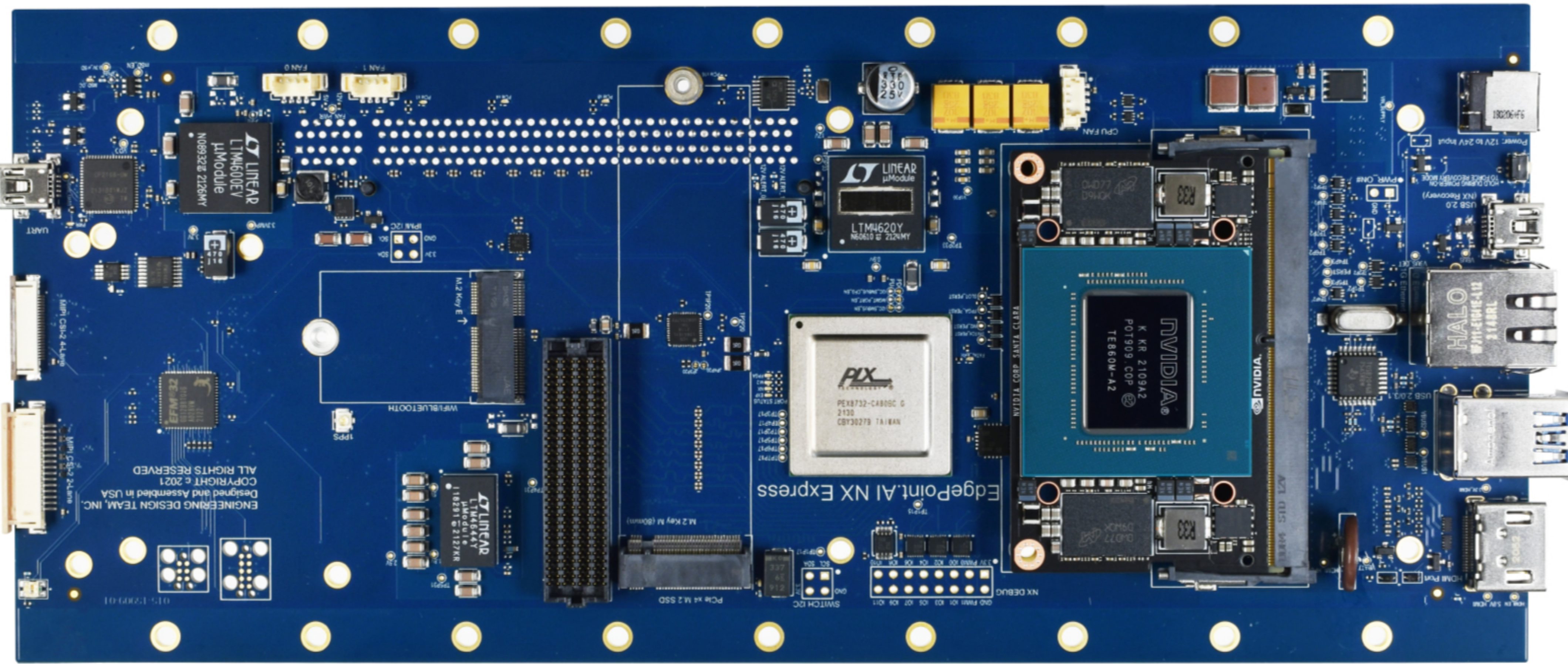
Edgepoint AI is a highly configurable NVIDIA carrier board - Jetson Xavier NX that can be easily paired with any of EDT's powerful I/O edge solutions to address the myriad of Edge AI use cases that extend beyond cloud infrastructure such as unmanned systems, industrial IoT, sensor fusion, and beyond...



Edgepoint.AI Board Specifications

NVIDIA XAVIER NX SPECIFICATIONS

Compatibility	NVIDIA Jetson Xavier NX 16GB
M.2 Key E	(1x) Supports WIFI and/or Bluetooth cards (PCIe gen 3 x1, USB 2.0, UART, I2S)
M.2 Key M	(1x) NVMe Expansion (PCIe gen 3 x4, 2280)
PCIe x16	(1x) PCIe gen 3 x8, supports up to 25 Watt cards
PCIe x8 (Optional)	(1x) PCIe gen 3 x8 SAEF Connector
Networking	(1x) 100/1000 BASE-T Ethernet
CSI Camera	* 15-pin 1.0mm pitch FFC connector, 3.3 VCC, MIPI CSI-2, 2-lane * 22-pin *0.5mm pitch FFC connector, 3.3 VCC, MIPI CSI-2, 2-lane
USB	* (1x) USB 2.0 Type * (1x) USB 3.0 Type A
Display	(1x) HDMI 2.0
Micro SD	Class 2 (2MB/s)
Power Input	24V DC, 5A max, center pin (+)
System Fan	(2x) 12V 4-pin fan connectors, PWM control
Operating Temperature	0 °C - 50 °C (ambient)



General Contact

info@edgepoint.ai
800.690.1234



Contact Sales

Thank you for your interest! We will respond to your inquiry as quickly as possible. EDT's standard business hours are 7am - 4pm PST

sales@edgepoint.ai



Contact Support

Please provide as much detail as possible (problem, product, OS, any customizations, etc.), and we will contact you as soon as possible.

tech@edgepoint.ai



Feature Request

If you are customer or someone interested in edgepoint.AI if it offered XYZ feature...Let us know! And Thanks!

info@edgepoint.ai

